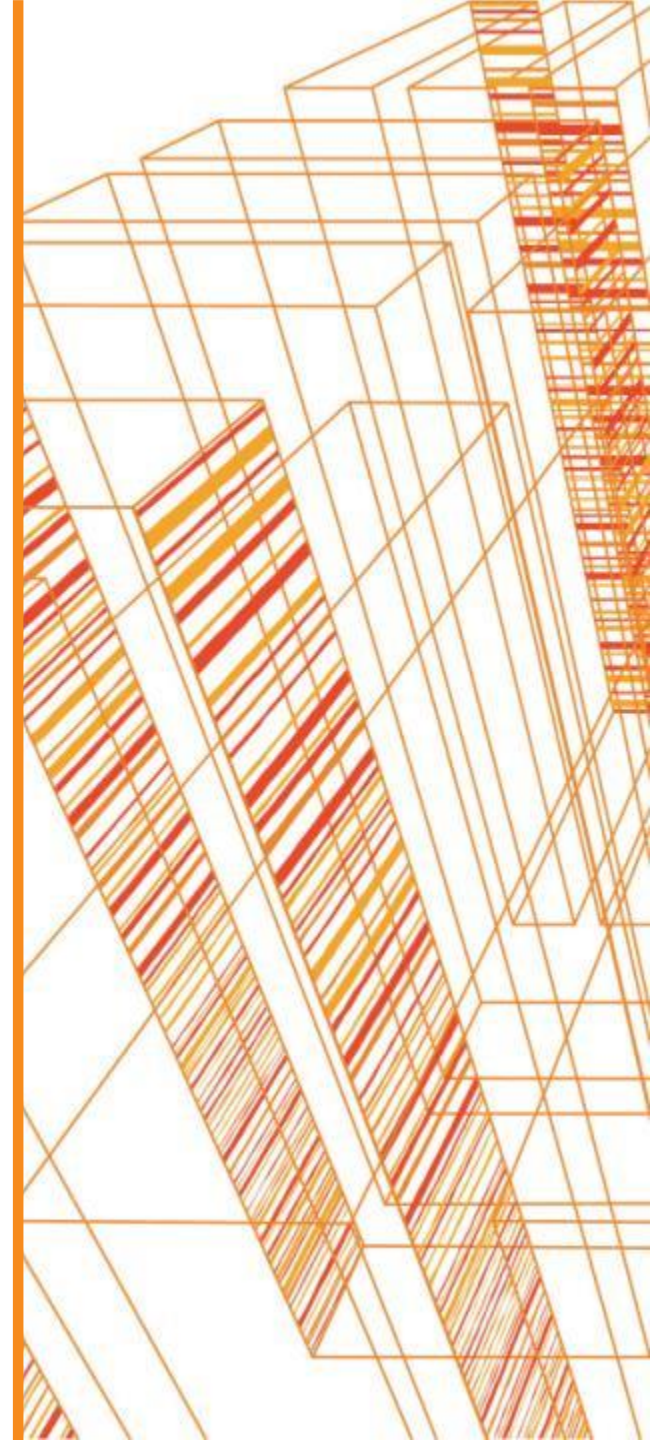


## **Facility No. 6 at Highveld Steel**

**(I.T.S. Building)**

**Highveld Steel  
EMALAHLENI (WITBANK), SOUTH  
AFRICA**

July 2016





# Introduction

- Facility No. 6 Description – ITS Building
  
- G.A. Drawing
  
- Photographs



# Description

## Situated

- ❑ Highveld Steel - Witbank Mpumalanga

## Description

### **I.T.S. Building**

Area = 491 m<sup>2</sup>

Power = 220 V

Potable water points

Ablution facilities

ITS Building fully fenced in

Parking available (Car Ports)



# Drawing G.A. Layouts

**NORTH ELEVATION**  
SCALE 1:100

**EAST ELEVATION**  
SCALE 1:100

**SOUTH ELEVATION**  
SCALE 1:100

**WEST ELEVATION**  
SCALE 1:100

**GLAZING NOTE**

WINDOW	AREA	DATE	REVISION	BY	CHK	APP
1	0.7500M	19/02/2012	Revisions raised to set built	AK	VT	AK
2	0.7500M-1.5000M					
3	1.5000M-2.1500M					
4	2.1500M-3.2500M					

**REFERENCE DRAWINGS**

DRAWING NO.	TITLE

**REVISIONS**

NO.	DATE	DESCRIPTION
1	19/02/2012	Revisions raised to set built

**EVRAZ EVRAZ HIGHFIELD STEEL AND VANADIUM**  
PO BOX 111, VANDERBILT, SOUTH AFRICA  
South Africa

**OPTIONAL SIGNATURE**

ROLE	NAME	DATE
DESIGN MANAGER		
ENG. MANAGER		
STEEL MANAGER		
PROJ. ENGINEER		
ENR. COORDINATOR		

**DRAWING TITLE**  
S.A.P. BUILDING ELEVATIONS

JOB NO: 01/0462 | C/CODE: NCSD01001 | SCALE: N/A

DRAWING NUMBER: G50C0252

DATE: 01/02/2012

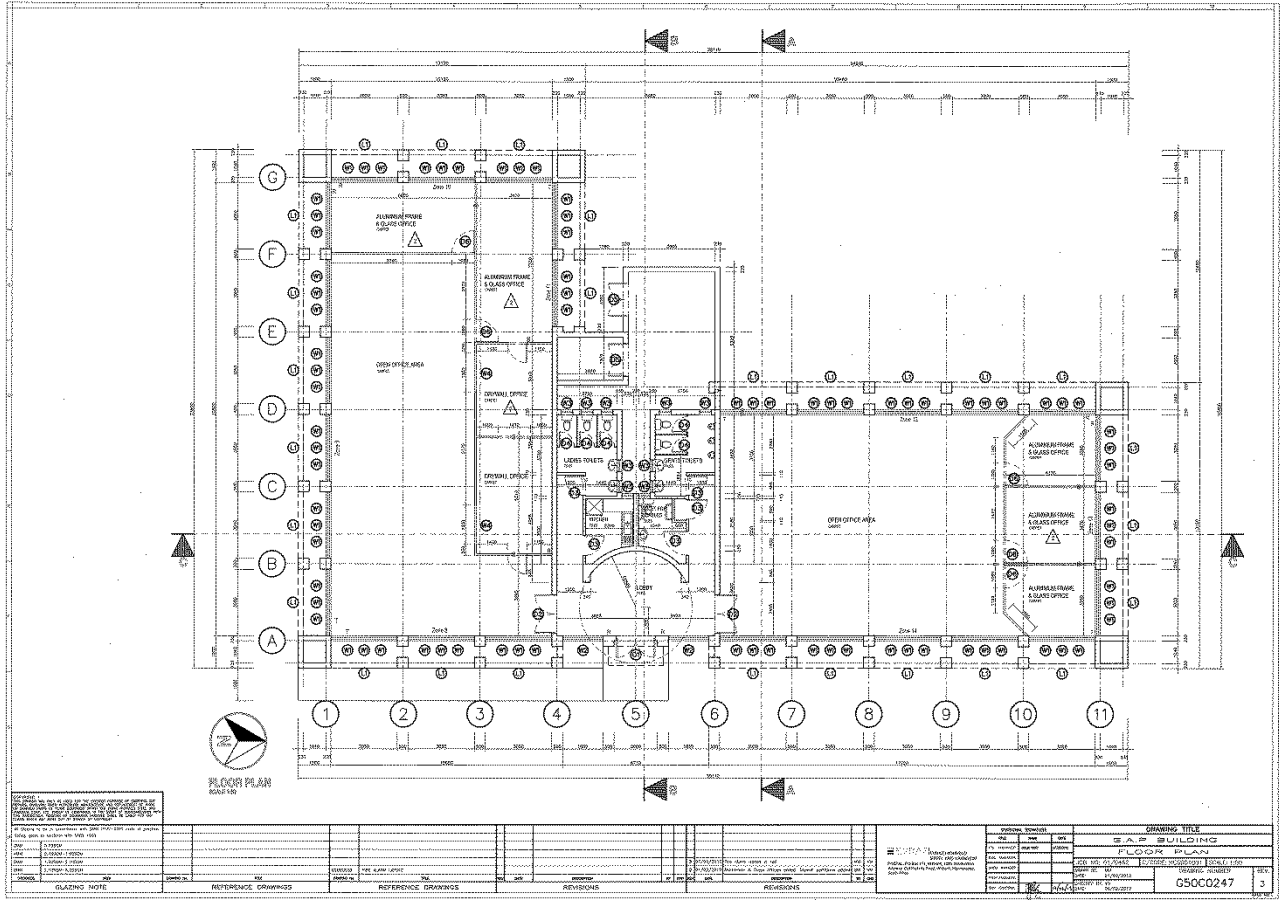
CHECKED BY: BK

DWG. 02/02/2012

REV. 1



# Drawing G.A. Layout





# Photographs





# Photographs

